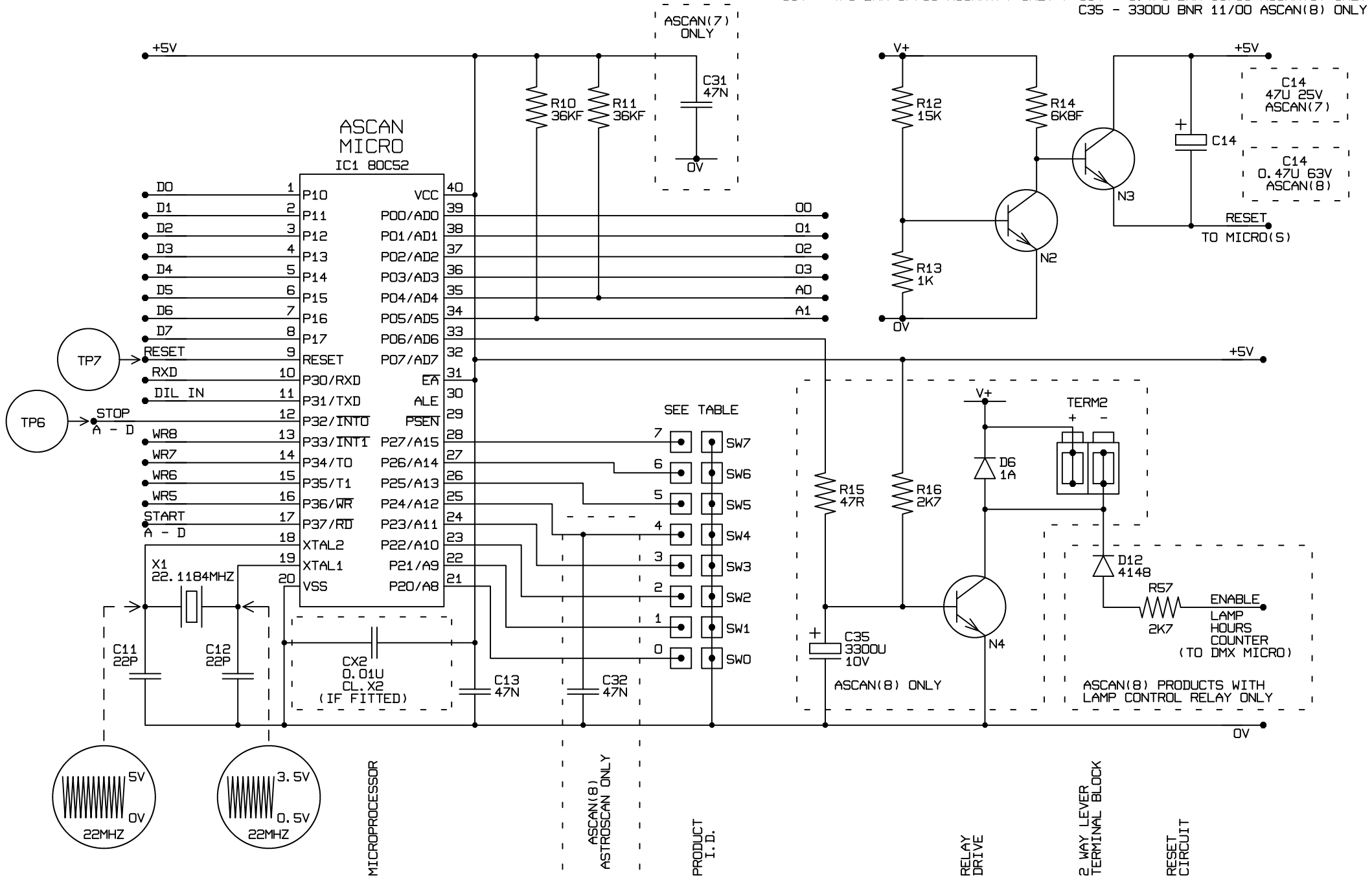
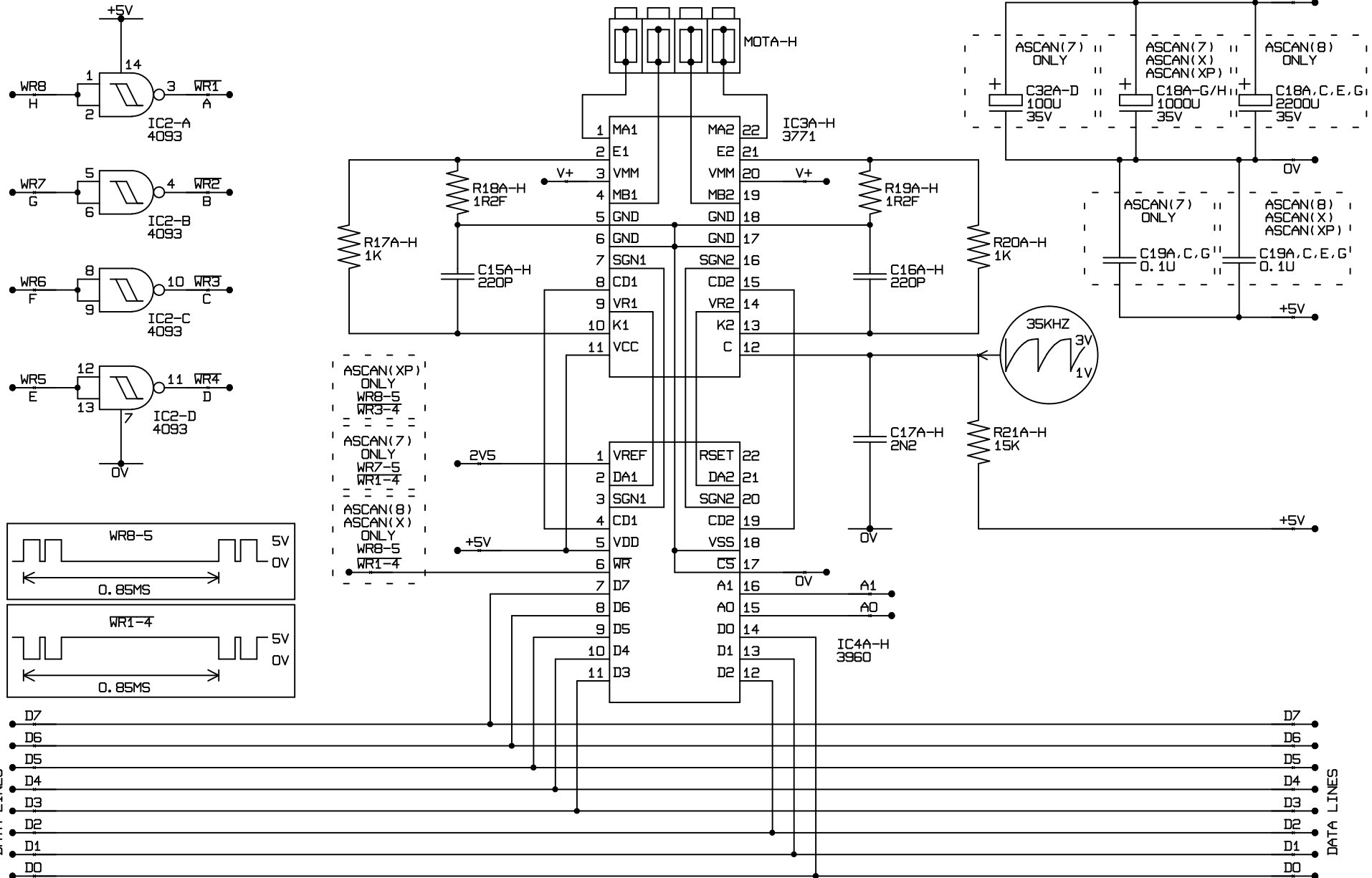


- MAINS INPUT
- FAN
- SECURITY SWITCHES
- LAMP CIRCUITRY
- MINISCAN HPE  
PTC: 1x480MA 6R
- INTERFERENCE SUPPRESSION
- MAINS TRANSFORMER
- 2 WAY INPUT TERMINAL BLOCK
- BRIDGE RECTIFIER
- +5V RAIL RESERVOIR CAPACITORS
- VOLTAGE DROPPING RESISTOR
- +5V REGULATOR
- 5V RAIL CAPACITORS

C14 - 47U BNR 07/00 ASCAN(7) ONLY / C14 - 0.47U BNR 11/00 ASCAN(8) ONLY  
C35 - 3300U BNR 11/00 ASCAN(8) ONLY



LEVER TYPE TERMINAL BLOCK TO BI-POLAR STEPPER MOTOR

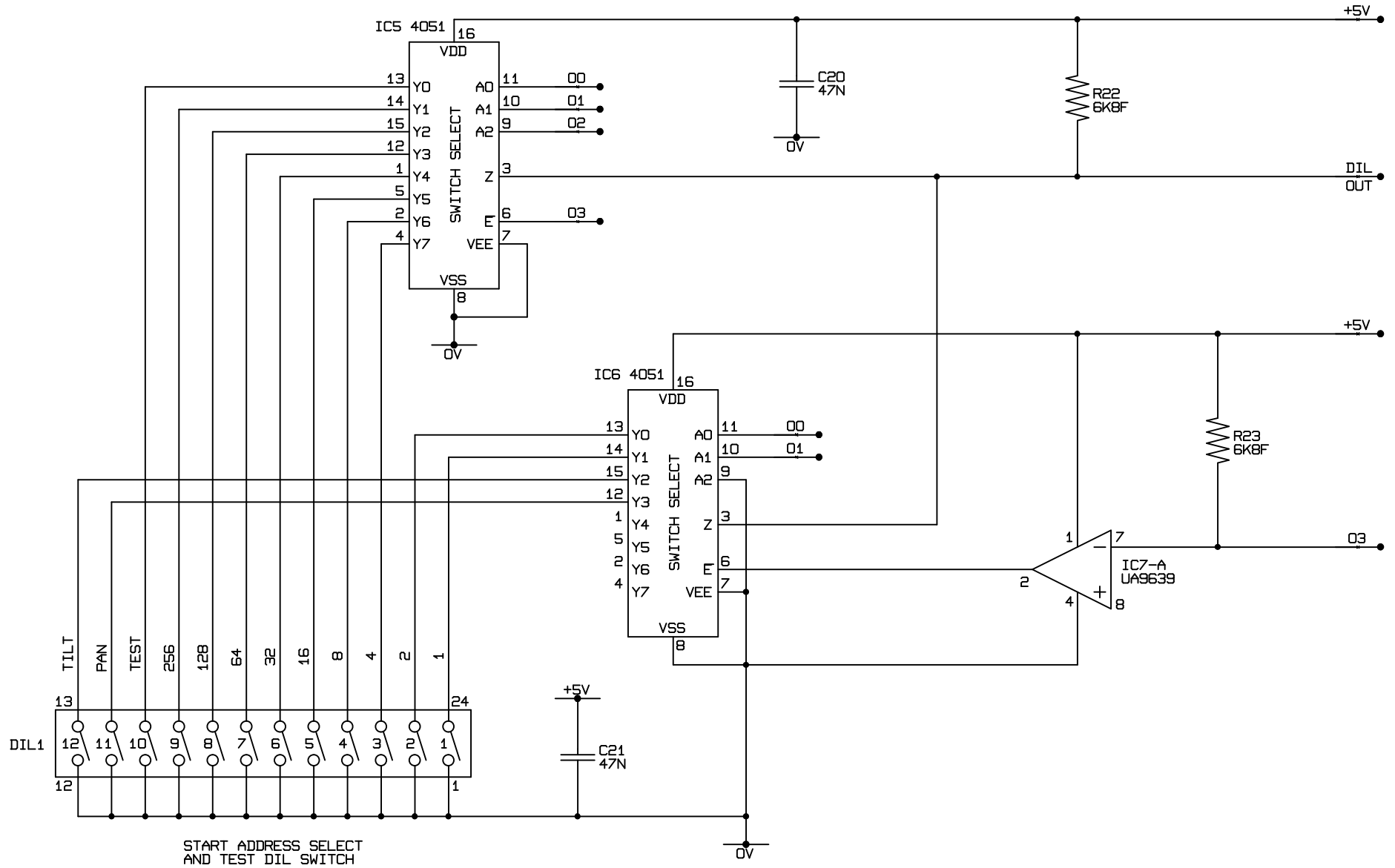


THIS CIRCUIT REPEATS 1-7/8 TIMES FOR MOTORS A-G/H IN ASCAN(7)/(8)/(X)  
 THIS CIRCUIT REPEATS 1-6 TIMES FOR MOTORS C-H IN ASCAN(XP)

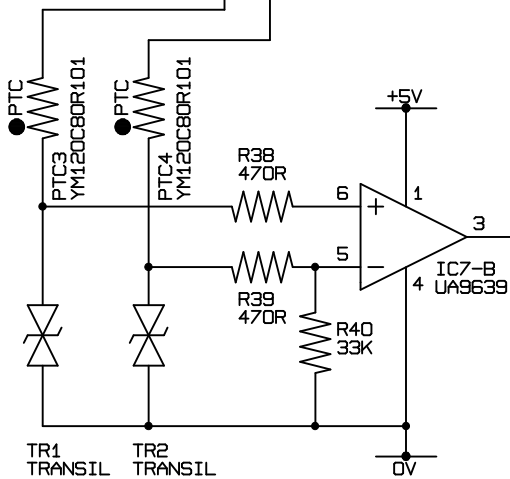
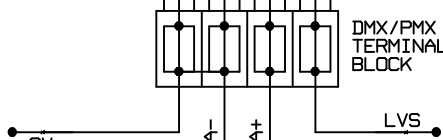
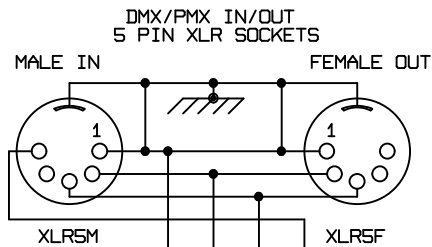
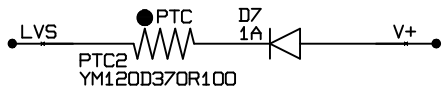
FROM SERIAL NO. 1001 TO

DATA LINES

DATA LINES

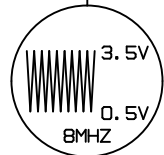
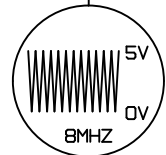
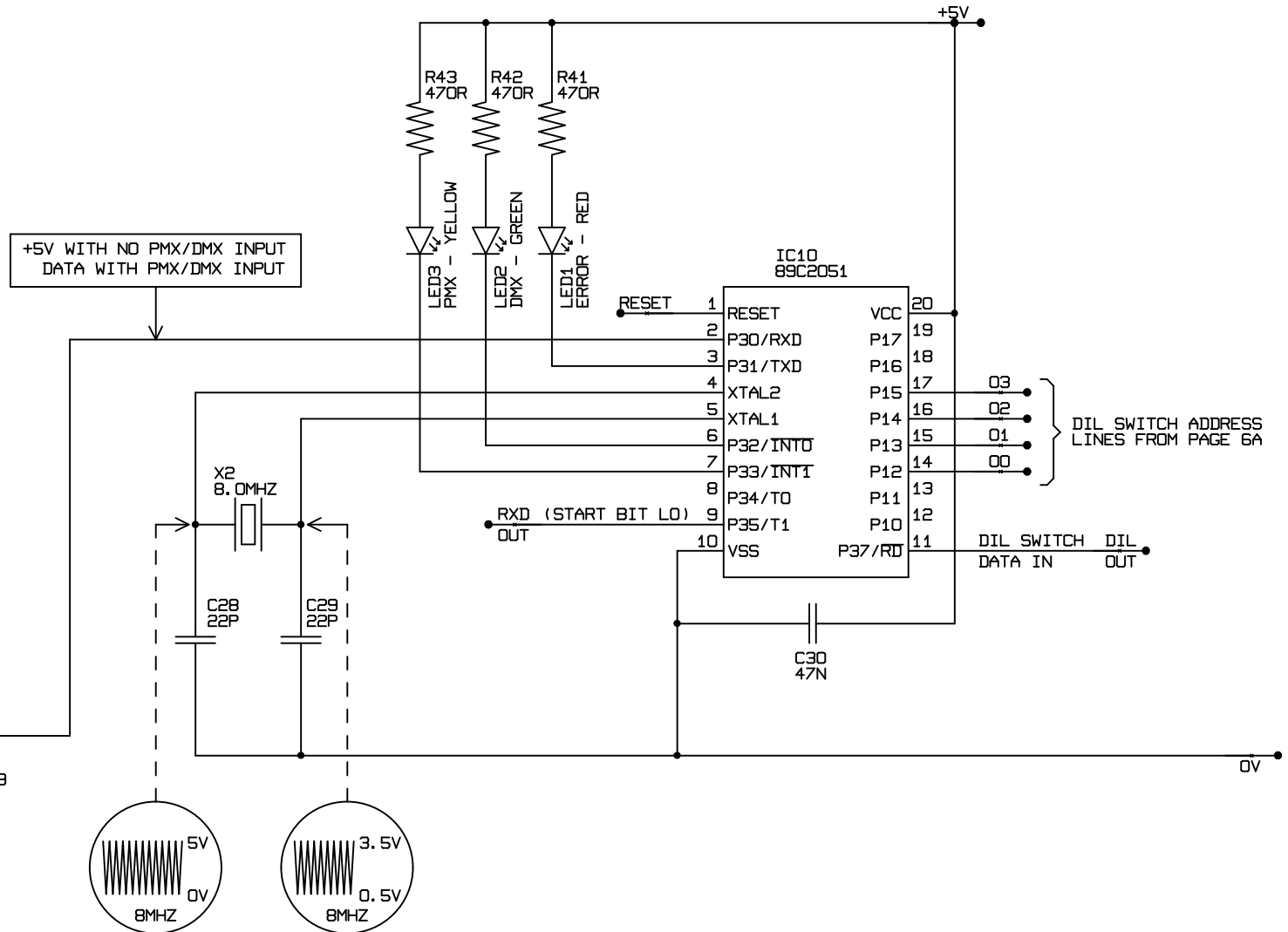


PIN NO.	DMX	PMX
1	SCREEN ↗	SCREEN ↗
2	DATA -	SIGNAL
3	DATA +	SIGNAL ≡
5	LVS	LVS



DMX/PMX INPUT STAGE

DMX/PMX RECEIVER



## ASCAN(7)

Products	Period of usage	Solder pads configuration	Latest software version	Notes	Code
MINISCAN HPE	since 1997 to 2004	○○○○	ASCAN 6.2 - 01/07/03 ASCAN7 DMX 1.73 22/12/98	-	699054/001